

GEOMETRY – 1.1 – 1.3 Review

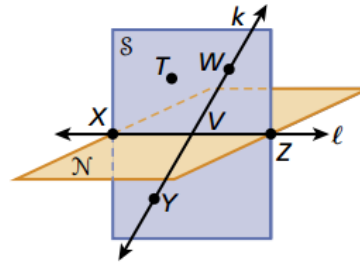
1-1 Understanding Points, Lines, and Planes

Draw and label each of the following.

1. a segment with endpoints X and Y
2. a ray with endpoint M that passes through P
3. three coplanar lines intersecting at a point
4. two points and a line that lie in a plane

Use the figure to name each of the following.

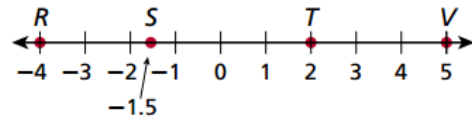
5. three coplanar points
6. two lines
7. a plane containing T , V , and X
8. a line containing V and Z



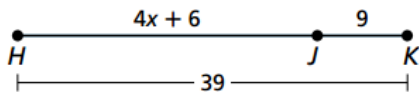
1-2 Measuring and Constructing Segments

Find the length of each segment.

9. \overline{SV} 10. \overline{TR} 11. \overline{ST}

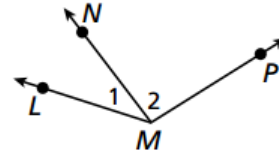


12. Use the figure to solve for x .



13. Q is the midpoint of \overline{PR} , $PQ = 2x$ and $QR = 6x - 20$. Find the length of PR .

14. Use the points to name angle 1 and angle 2 in the diagram.



15. \overrightarrow{RS} bisects $\angle QRT$, $m\angle QRS = (3x + 8)^\circ$, and $m\angle SRT = (9x - 4)^\circ$. Find $m\angle SRT$.

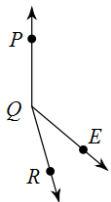
Classify each angle by its measure.

16. $m\angle PVQ = 21^\circ$

17. $m\angle RVT = 96^\circ$

18. $m\angle PVS = 143^\circ$

19. Find x if $m\angle PQR = 21x - 4$,
 $m\angle PQE = 15x + 10$, and $m\angle EQR = 34^\circ$



20. Points are collinear if they: _____